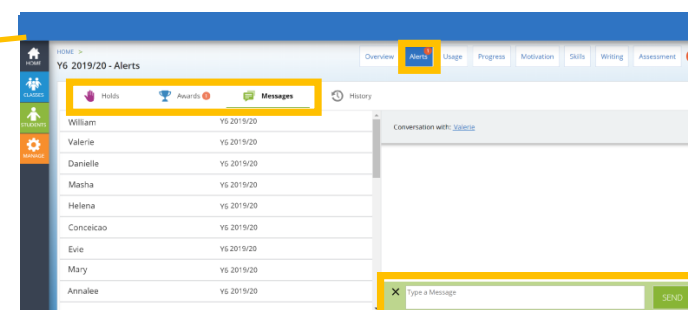
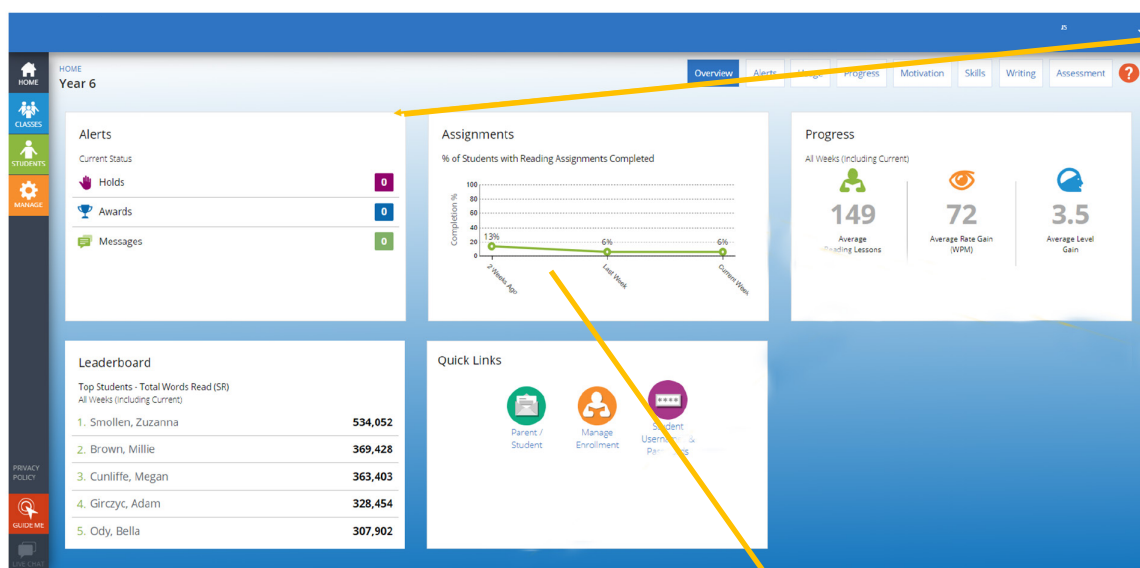
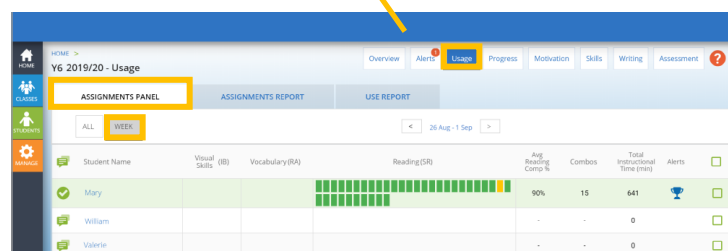


Navigating your individual Classes and Groups page

Help guide



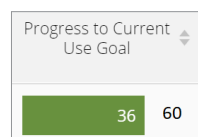
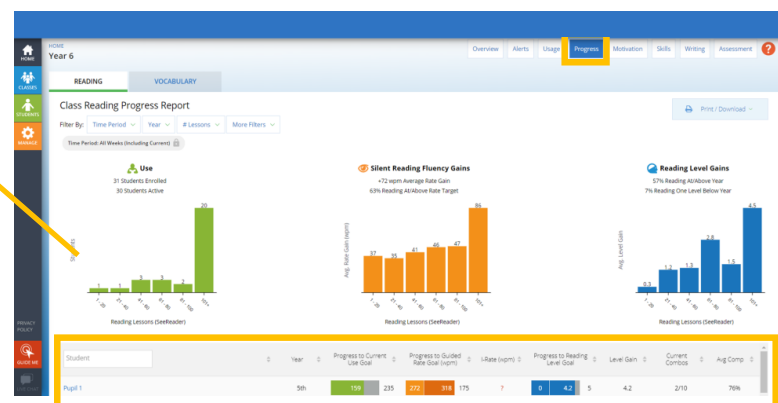
The Alerts tile flags up if pupils are struggling and are placed On Hold, or if they have achieved a certificate for unlocking a Reading level. You can also message the Class or individual pupils to recognise an achievement or offer guidance.



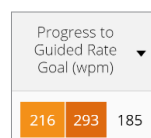
Clicking the Assignments tile and choose the ASSIGNMENTS PANEL (WEEK). Focus on the Reading lessons (SR). Each box represents a lesson to be completed that week. A green box indicates a comprehension score of 80% or above; yellow, 70-80%; and red, less than 70%.



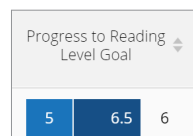
Clicking the Progress tile opens the Class Reading Progress Report



36 (in green) indicates that the pupil has completed 36 Reading lessons out of a target of 60 (individual target for that pupil).



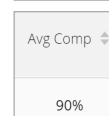
185 is the target reading speed (in words per minute) for the end of the academic year; 216 was the starting speed, and 293 is the current reading speed (both using the Guided Window).



6 is the target Reading level for the end of the academic year (6 = Level F); 5 was the starting level, and 6.5 is the current Reading level (see Teacher Hub for a break-down of Reading levels v. academic years).



1 level gain = an increase in the readability of texts by 1 year.



Pupils should be aiming to achieve an average comprehension score of 75-80%.



No. of Combos achieved v. no. of Combos needed to unlock next level (e.g. 5/10 = 5 Combos achieved out of 10 Combos needed).



Independent reading rate (i.e. speed in words per minute) reading without the Guided Window.